

Public Health PBRN

Monthly Virtual Meeting

November 21, 2013

Research-in-Progress Presentation by
Washington PBRN

Public Health Activities & Services Tracking
PHAST “Finance” ...Works in Progress
Betty Bekemeier, University of Washington

Conference Phone: 877-394-0659

Conference Code: 7754838037#

Please remember to mute your computer speakers during the presentation



at the University of Kentucky College of Public Health



PHAST "Finance" Works in Progress

NCC PBRN Presentation

--November 21, 2013 Webinar

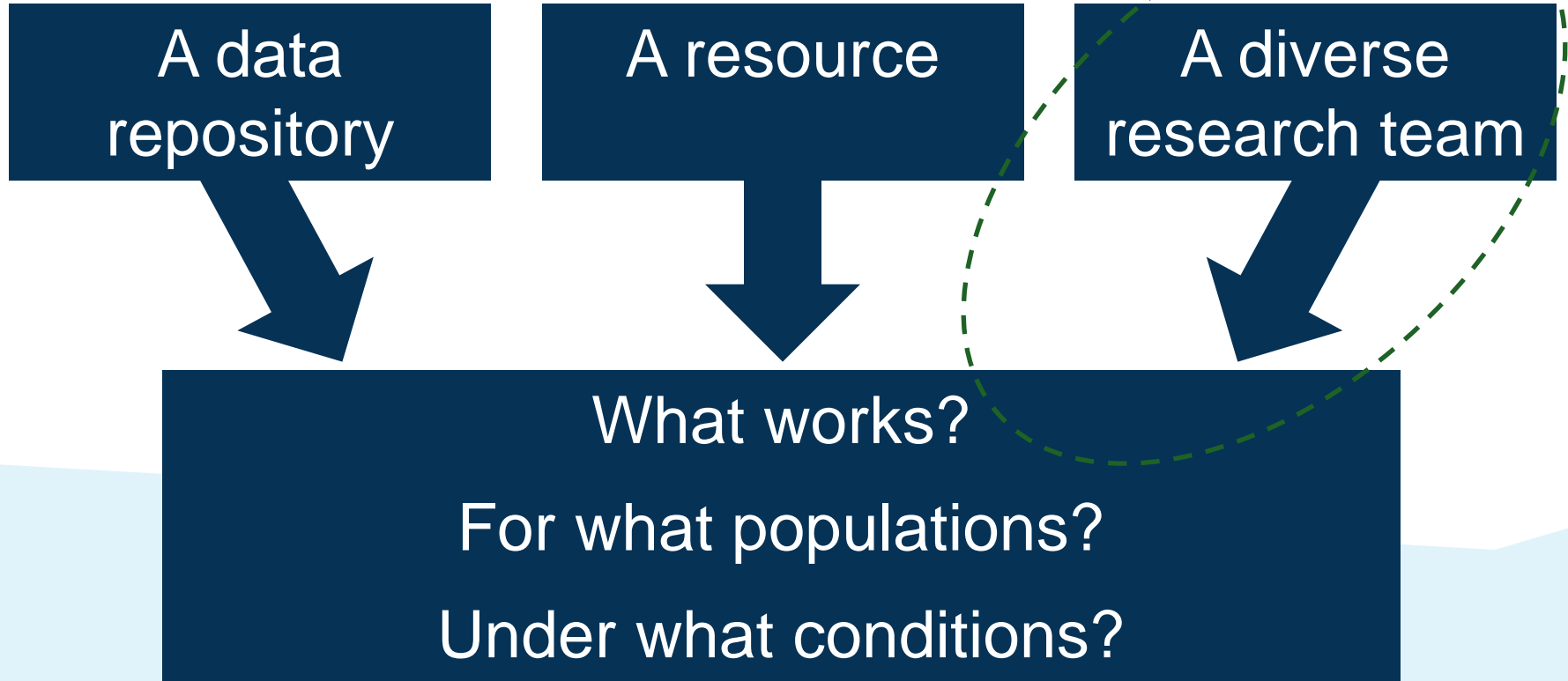
PBRN partners and PHAST Research Team

Betty Bekemeier, Matt Dunbar, Greg Whitman,
Athena Pantazis, David Grembowski, Jerry Herting, Michelle Yip

Outline

- PHAST Overview
- PHAST-Finance
 - MCH Findings
 - EH descriptives to date
 - CD Control descriptives to date
- PHAST Finance “Other”

The PHAST Study: WHAT

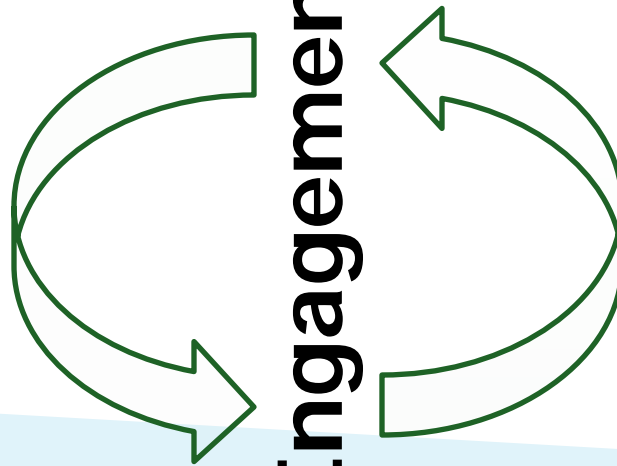


Collaborative Process

Practice

- ▶ Data "owners"
- ▶ Interested state-wide workgroups
- ▶ Local knowledge
- ▶ Priorities for decision-making

Engagement

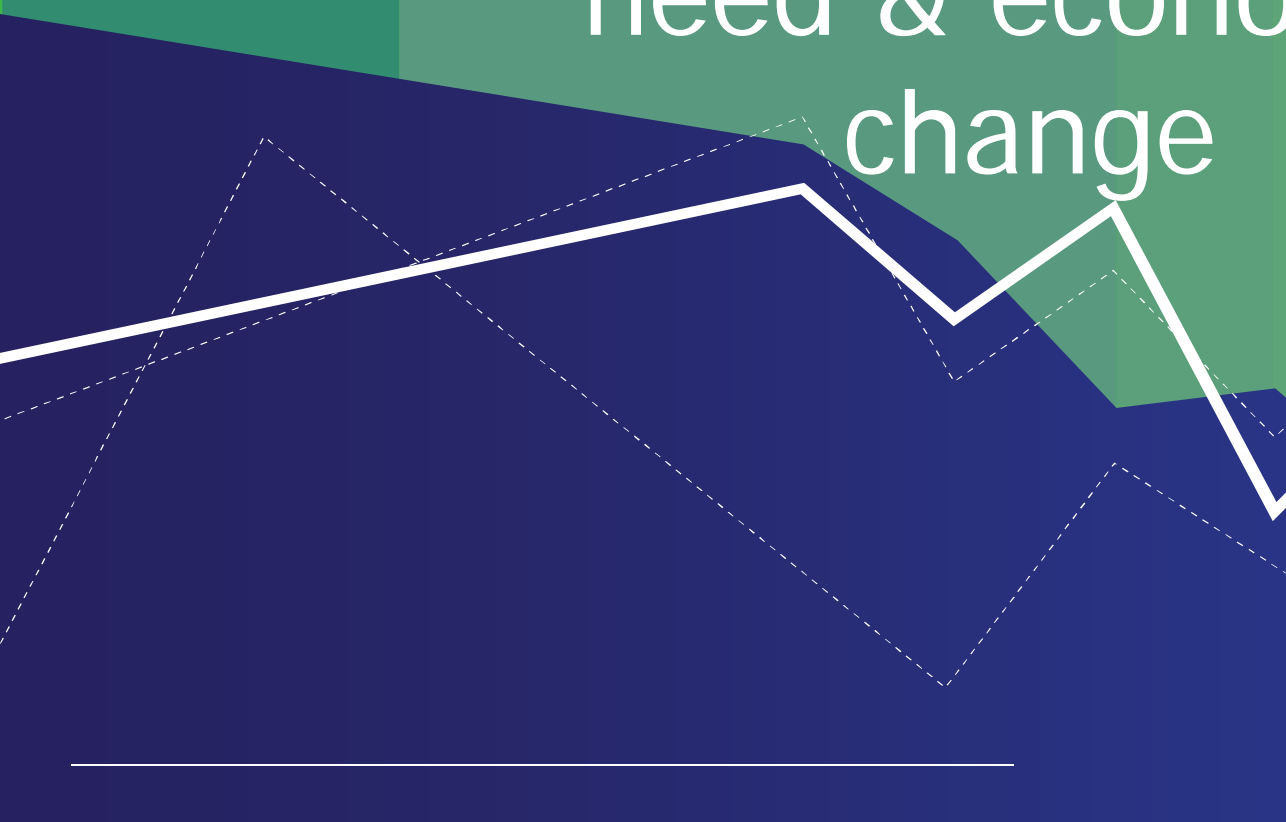


Academia

- ▶ PHAST database
- ▶ Data management resources
- ▶ Analytic expertise
- ▶ Links to academic & research resources



PHAST Finance: Variation in LHD investments relative to need & economic change





LHD targeted expenditures: Health outcomes for women and children



Research Question

Are LHD expenditures on MCH services impacting health outcomes for populations at risk?



Findings/Discussion

- *LHD expenditures have an independent impact on birth outcomes...especially in areas of high poverty*
- *Despite limited variation & change in the outcome, an effect was detected*
- *Targeted expenditures “impact” more proximal outcomes*

Implications

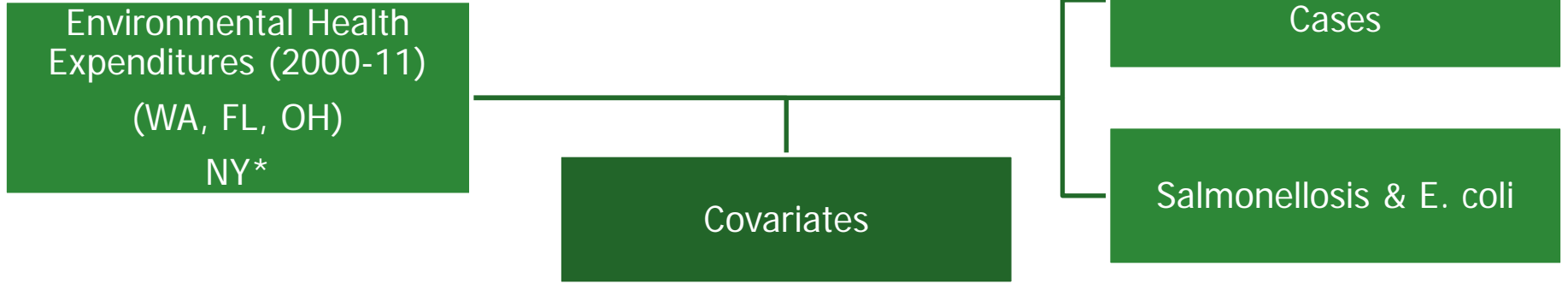
- LHD *assurance* function is critical....given service MCH reductions & transitions
 - Effective investments must not be lost
- PBRNs & detailed (often existing!) data are key to advancing PHSSR



Environmental Health Update



Environmental Health Conceptual Model



Population characteristics

- Social Disadvantage Index (SDI)
- % poverty
- % of black
- % of Hispanics

LHD services

- food permits
- routine inspections
- food worker cards
- EH specialists

Community

- % food workers

Others

- CBSA
- State

Note: (*) variables still being pulled together. gray'd out variables = covariates not fully available.
 SDI = Social Disadvantage Index (including unemployment, income, households receiving public assistance).
 CBSA = Core Based Statistical Area (metropolitan, micropolitan, rural).

What is in the EH bucket? (WA, FL, & OH)

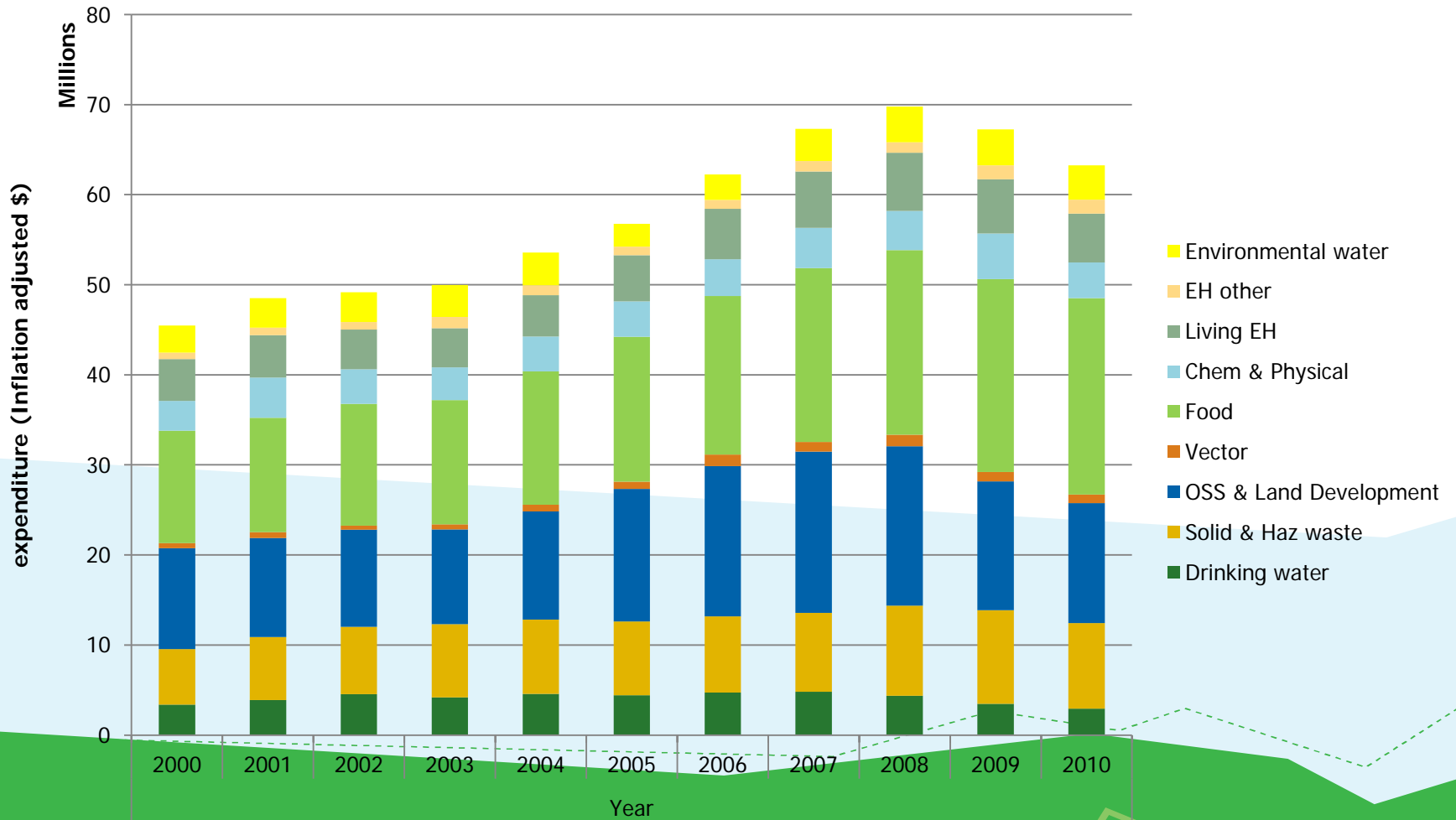
EH

| WA (WA BARS) | FL (Service code) | OH |
|---|---|--|
| Drinking Water Quality (wa_exp_562.52) | <ul style="list-style-type: none"> Limited use public water systems (#57) Public water system (#58) Private water system (#59) | <ul style="list-style-type: none"> Local Environmental Health State Environmental Health Federal Environmental Health |
| Solid & Hz Waste (wa_exp_562.53) | <ul style="list-style-type: none"> Solid waste disposal service (#63) | |
| OSS & Land Development (wa_exp_562.54) | <ul style="list-style-type: none"> Individual sewage (#61) Public sewage (#62) | |
| Vector (wa_exp_562.55) | <ul style="list-style-type: none"> Rabies surveillance (#66) Arbovirus surveillance (#67) Rodent/Arthropod Control (#68) | |
| Food (wa_exp_562.56) | <ul style="list-style-type: none"> Food Hygiene (#48) | |
| Chemical & Physical (wa_exp_562.57) | <ul style="list-style-type: none"> Storage tank compliance service (#55) Biomedical waste services (#64) Toxic substances (#73) | |
| Living Environments (wa_exp_562.58) | <ul style="list-style-type: none"> Migrant labor camp (#52) Housing & Public building (#53) Mobile home & park (#54) Pools/bathing places (#60) Tanning facility services (#69) | |
| EH – Other (wa_exp_562.59) | <ul style="list-style-type: none"> Sanitary nuisance (#65) Air pollution (#71) Radiological health (#72) ** Body art (#49) | |
| Environment Water Quality (wa_exp_562.60) | <ul style="list-style-type: none"> Water pollution (#70) SUPER Act Services (#56) | |
| | <ul style="list-style-type: none"> coastal beach monitoring (#47); Lead monitoring services (#50); Consumer product satisfaction, community EH project, EH initiatives (#45); Group care facility (#51); General EH (#75); General environmental engineer (#76); Environmental health surcharge (#115) | |

WA

EH

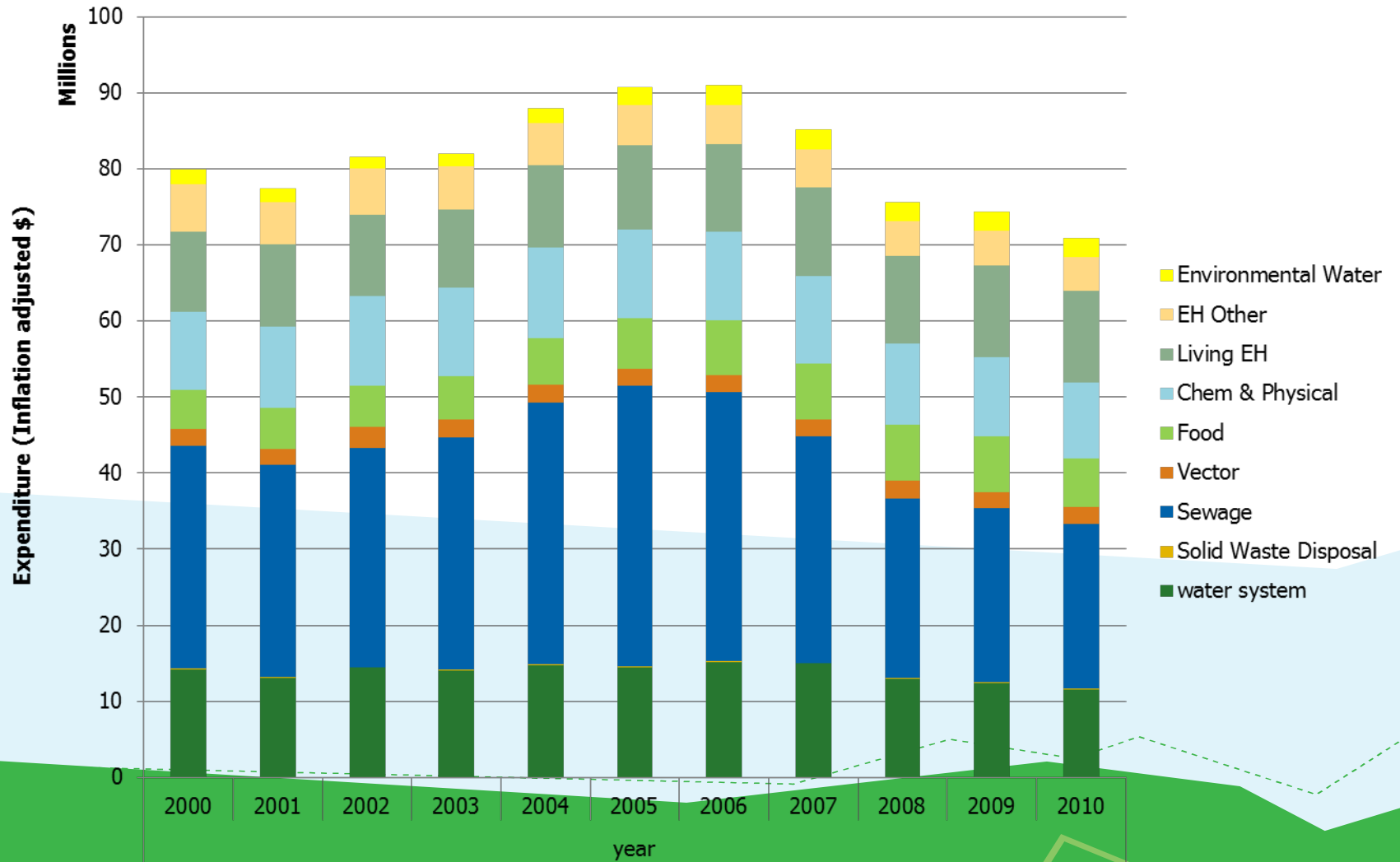
Total EH Expenditure by Service, WA



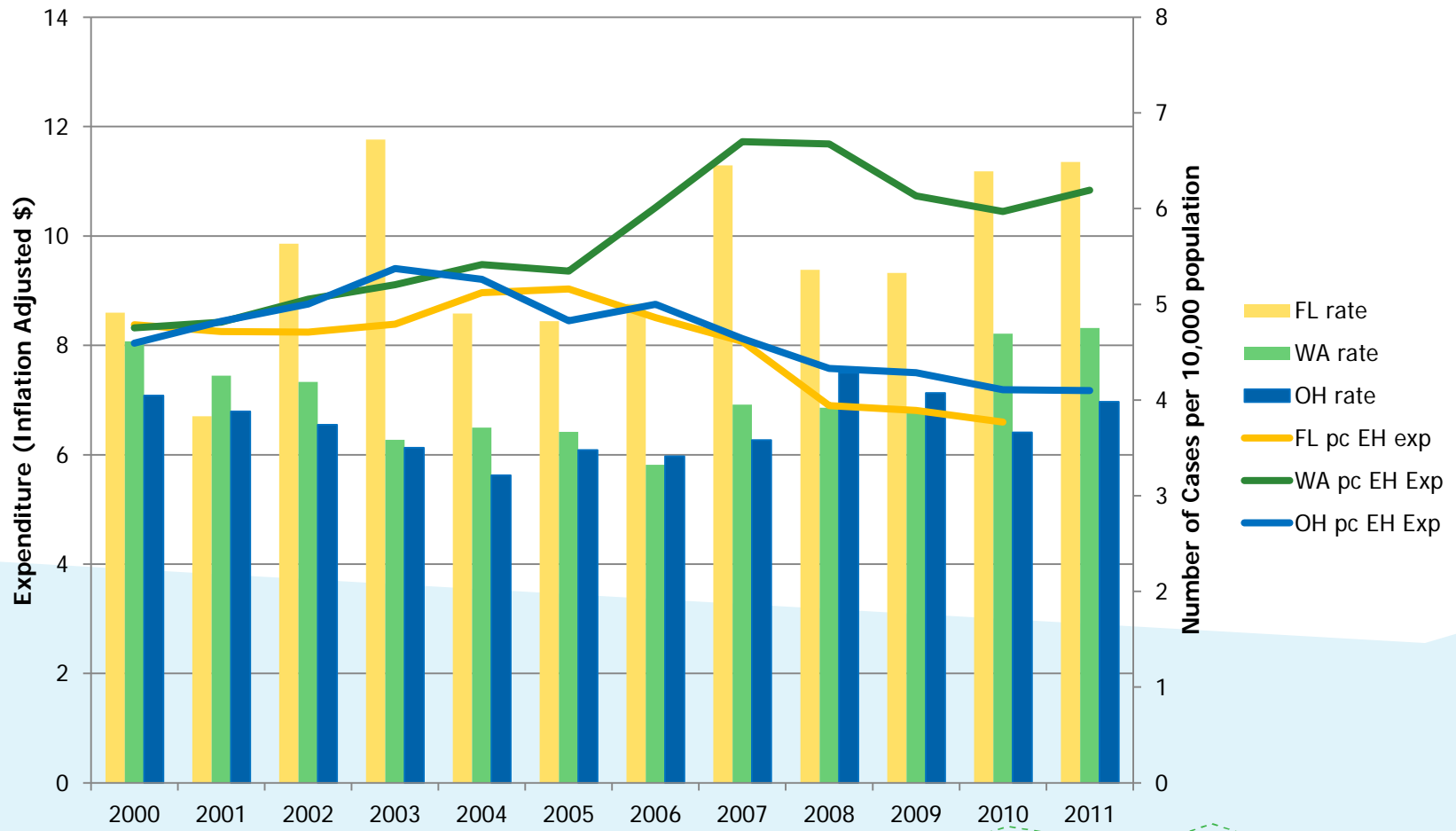
FL

EH

Total EH Expenditure, FL



LHD EH Expenditures & Mean of 7 combined Enteric, Foodborne & Waterborne (EFW) Disease Rates



Note: The 7 combined diseases(95+% of EFW disease): Campylobacteriosis, Cryptosporidiosis, E. Coli, Giardiasis, Hepatitis A, Salmonellosis, and Shigellosis.

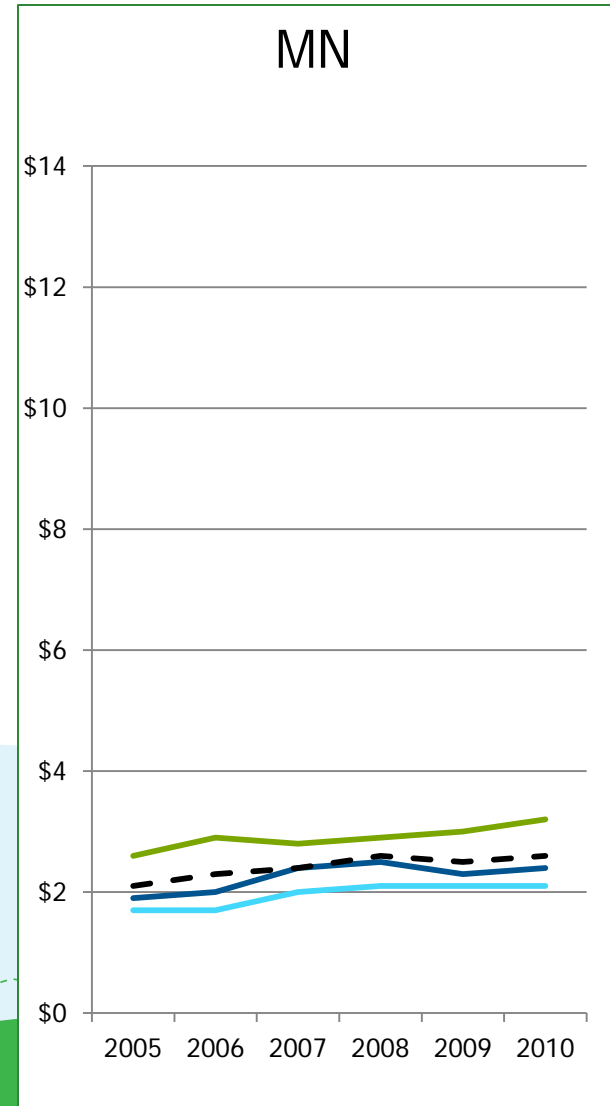
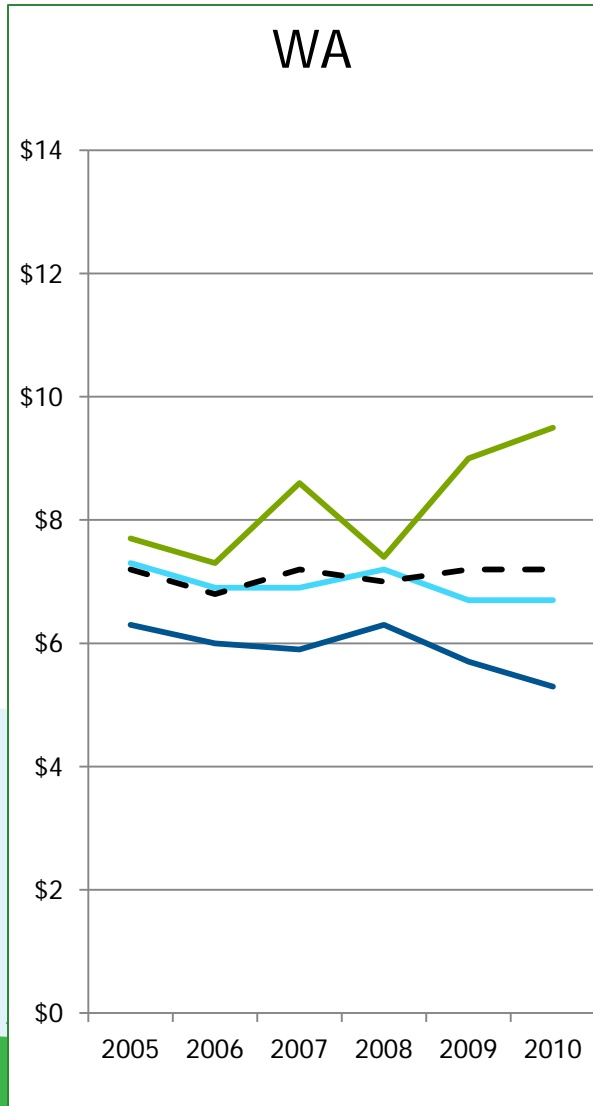
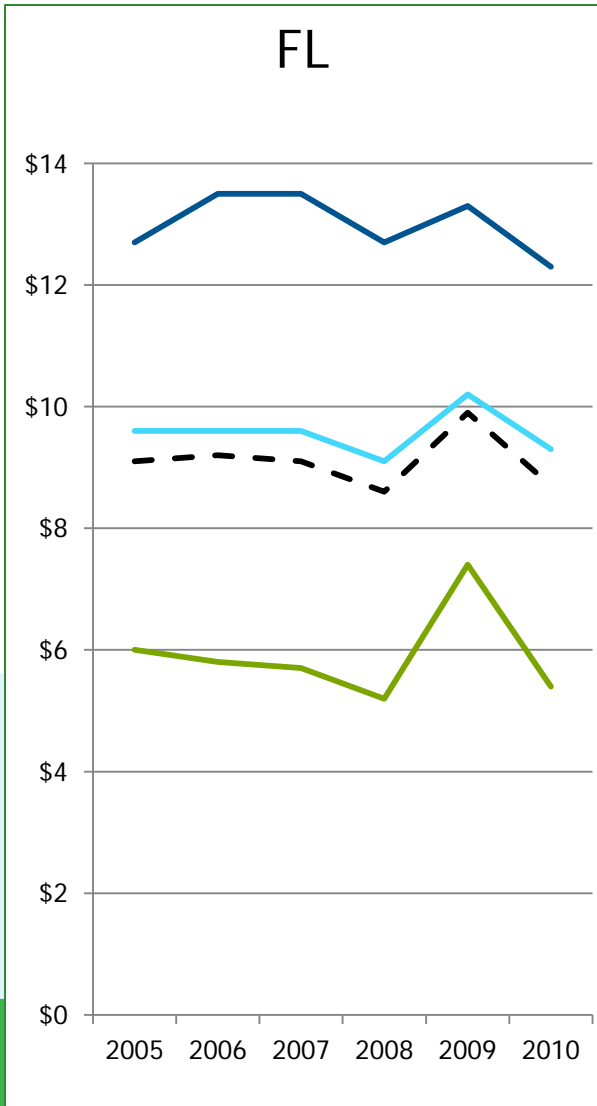


Communicable Disease Update



Per Capita CD Expenditures by CBSA

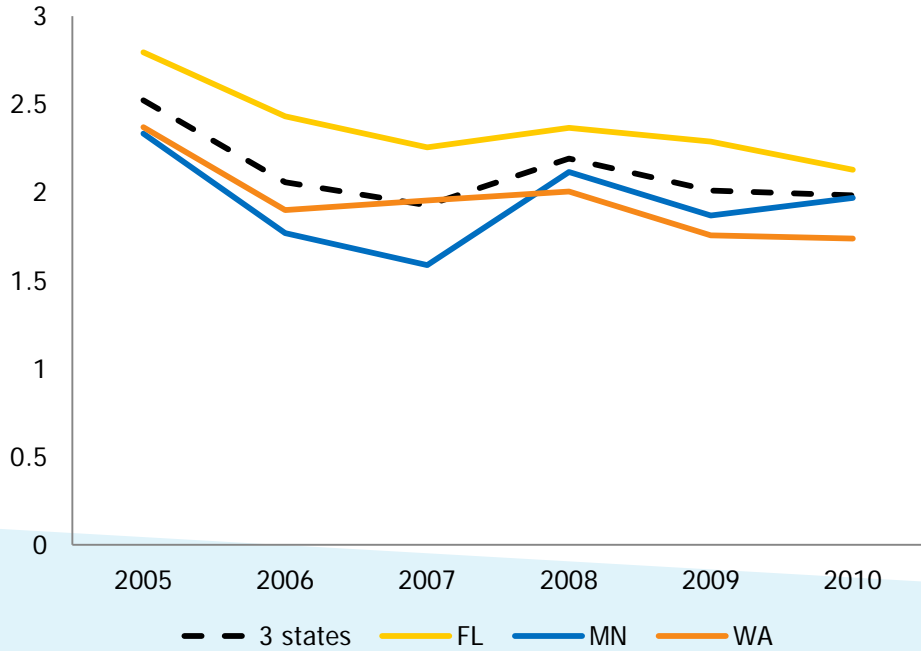
CD



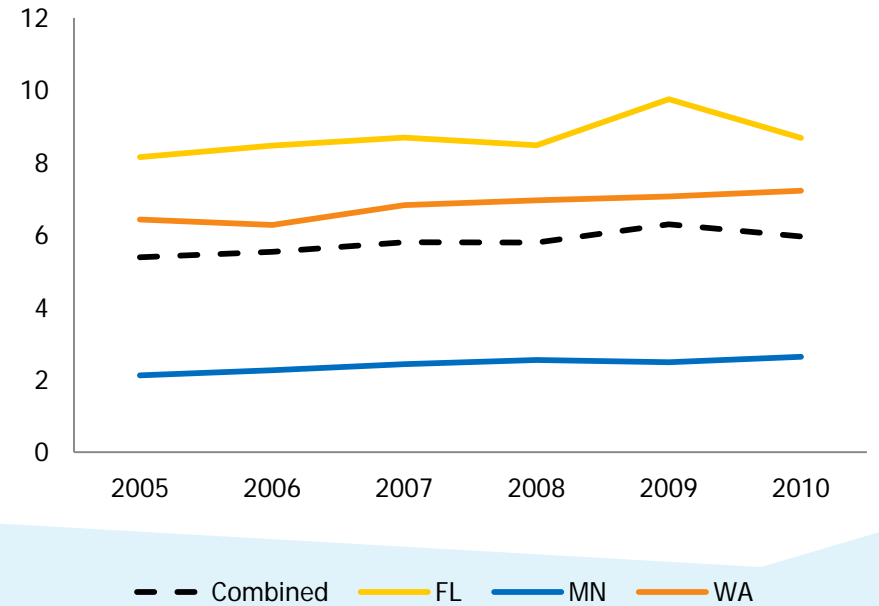
— metro — micro — rural - - - combined

CD

Mean CD Mortality per 10,000



Per Capita CD Expenditure for LHDs





CD Outcomes

CD

- Immunization Rates
- Morbidity

Analytic Next Steps

- Fewer Years (to include Imms data)
- More States (NY being added)

Other...PHAST-Finance

- Incorporation of 3 “latent” LHD classes (paper under review)
- Inclusion of **MPROVE** data
- Comparisons of MCH, EH, CD funding overall—by 4 states, by before/after 2008
- Visits/webinars/meetings in/with YOUR PBRN &/or state partners
- Study end-date: May 31, 2013

PHAST Papers

- ▶ Bekemeier, B. (2012). Tracking local public health services to inform decision making. *Northwest Public Health*, Spring/Summer 29(1), 14-16. <http://www.nwpublichealth.org/archives/s2012/tracking-local-public-health-services-to-inform-decision-making>.
- ▶ Bekemeier, B., Bryan, M., Dunbar, M., & Fowler, C. (2012). Local health department provision of WIC Services relative to local “need”— examining 3 states and 5 years. *Frontiers in Public Health Services and Systems Research*, 1(1), Article 2. <http://uknowledge.uky.edu/frontiersinphssr/vol1/iss1/2>
- ▶ Bekemeier, B., Dunbar, M., Bryan, M., & Morris, M. (2012). Local health departments and specific Maternal and Child Health expenditures: Relationships between spending and need. *Journal of Public Health Management and Practice*, 18(6), 615-622.

Under Review:

- ▶ Bekemeier, B., Pantazis, A., Dunbar, M., & Herting, J. R. (2013, under review). *Using available data to classify local health department approaches to service*.
- ▶ Bekemeier, B., Yang, Y., Dunbar, M., Pantazis, A., & Grembowski, D. (2013, under review). *Benefits of Targeted Local Health Department Expenditures to County-level Birth Outcomes*.

THANK YOU!

**The Robert Wood Johnson
Foundation**

**...and PBRN
Colleagues!!**

- Florida
- Minnesota
- Ohio
- Washington
- New York

**Great teams have the
"right people on the bus."**

(Jim Collins,
Good to Great, 2001)



Public Health Activities and Services Tracking

Other Meeting Agenda Items

PBRN Research Updates

- Welcome to new PBRNs, Alabama and Virginia
- APHA Debrief
- CDC Injury Center proposal participating networks
 - North Carolina
 - Tennessee
 - Ohio
 - Virginia
 - Pennsylvania
 - Alabama
- AJPM December Theme Issue on PBRNs
- DACS update
- RWJF Open Forum- PBRN presentations

Dissemination Opportunities

- *Frontiers*
- Keeneland Conference and PBRN Grantee Meeting

Funding Opportunities

- Quick Strikes
- AcademyHealth Scholarships to the ARM and PHSR IG meeting- Kate Papa

For more information contact:

Glen Mays

Glen.mays@uky.edu

111 Washington Avenue, Suite 201

Lexington, KY 40536

859-218-0113

www.publichealthsystems.org