



Dissemination and translation of public health systems and services research through the lens of local public health

Minnesota Public Health Research to Action Network

Renee Frauendienst, Julie Myhre, Janelle Schroeder, Kim Gearin, Beth Gyllstrom
Keeneland Conference for Public Health Systems and Services Research, Lexington, KY

April 10, 2013



Minnesota
Public Health
Research to
Action Network

health reform

MINNESOTA

- The Minnesota Statewide Health Improvement Program (SHIP) covered all 87 counties, plus 9 of 11 Tribal governments.
- SHIP represents unprecedented statewide investment of \$47 million (\$3.89 per person) for the years 2009-2011.
- SHIP initiative driven by a menu of evidence-based, policy, systems and environmental (PSE) change strategies to promote nutrition, increase activity, and reduce tobacco use and exposure.



Objectives

- Examine methods used in Minnesota to monitor evaluation and translation activities of our PBRN
- Give examples of active engagement of practice partners throughout all phases of research
- Give examples of translation at program, organization, system levels
- Explore interconnections between engagement, dissemination and translation
- Identify lessons learned

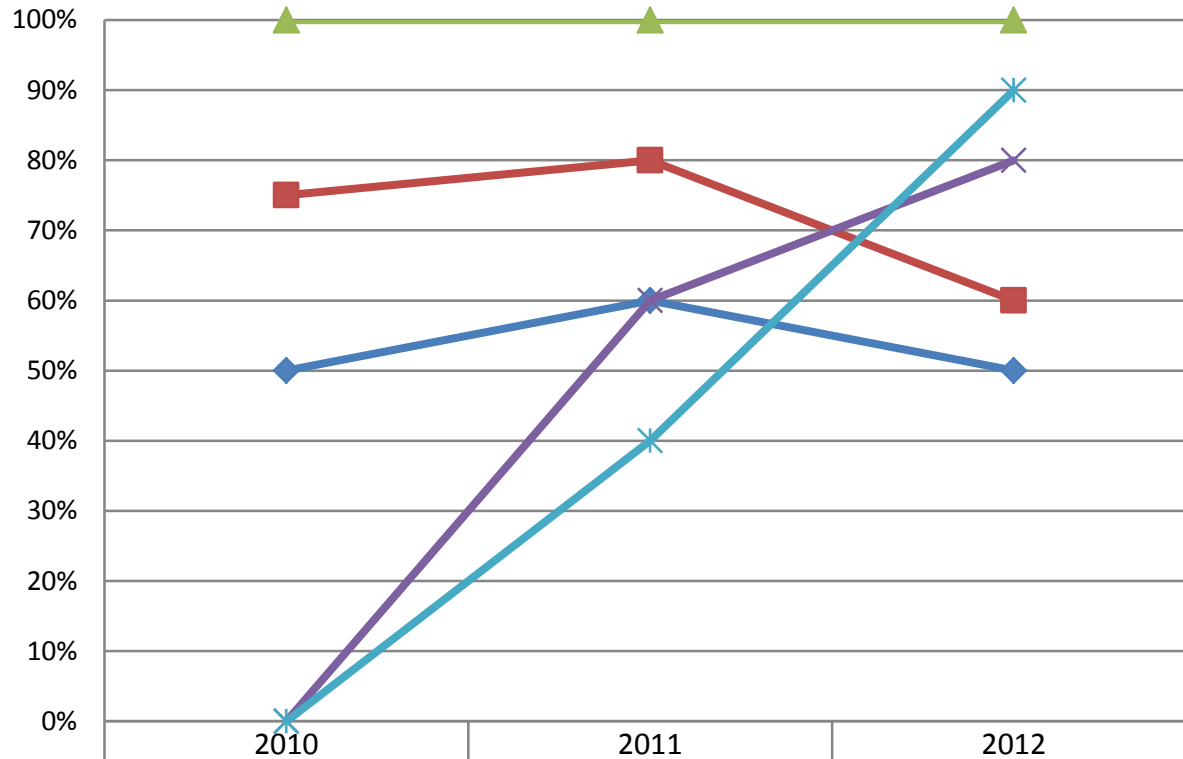
Minnesota Public Health Research to Action Network



Minnesota Public Health Research to Action Network



Percentage of meetings focused on five tasks of a PBRN, Minnesota Research to Action Network Steering Committee, 2010-2012



◆ Research or funding opportunity	50%	60%	50%
■ Network development	75%	80%	60%
▲ Conducting research	100%	100%	100%
✕ Dissemination	0%	60%	80%
✱ Translation	0%	40%	90%

Research to Action Network: State CHS Advisory Committee

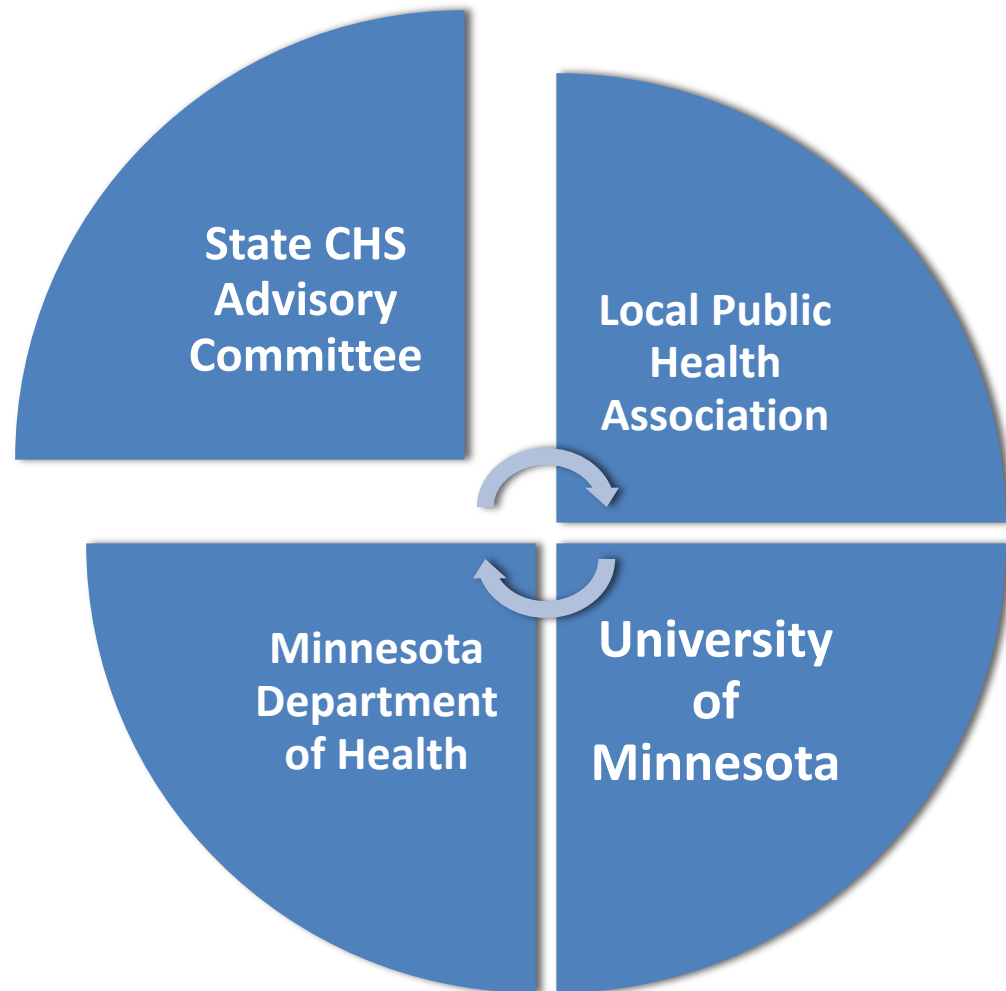
County commissioners and health officials of all 52 community health boards

Convened quarterly by Commissioner of Health

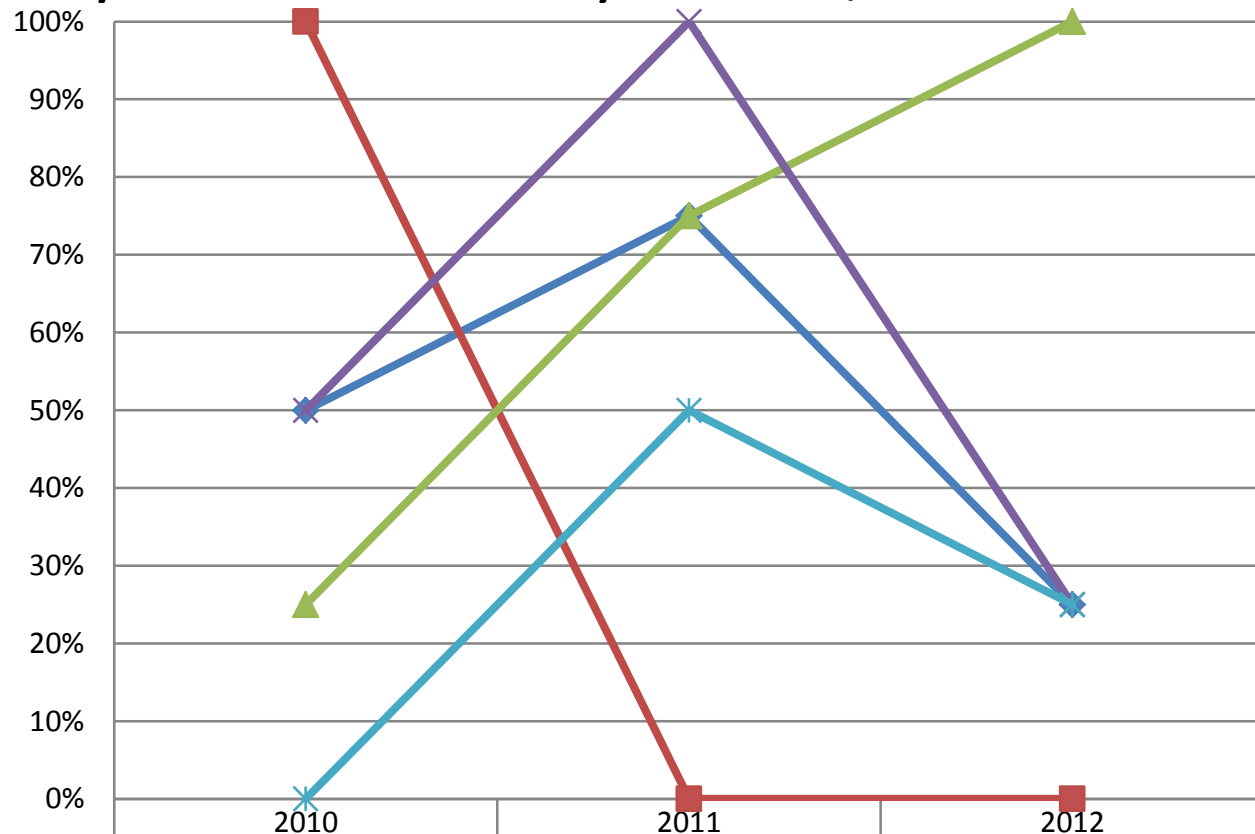
Sets the course for system

State/local workgroups and recommendations

Meeting presentations, written reports & displays



Percentage of written reports focused on five tasks of a PBRN, State Community Health Services Advisory Committee, 2010-2012



◆ Research or funding opportunity	50%	75%	25%
■ Network development	100%	0%	0%
▲ Conducting research	25%	75%	100%
✕ Dissemination	50%	100%	25%
✱ Translation	0%	50%	25%

Research to Action Network: Local Public Health Association



Top public health
leaders of all 70
LHDs

Statewide and
regional meetings

Research to Action Network: University of Minnesota



School of Public Health

Research design and analysis, manuscript preparation and presentation

QI expertise



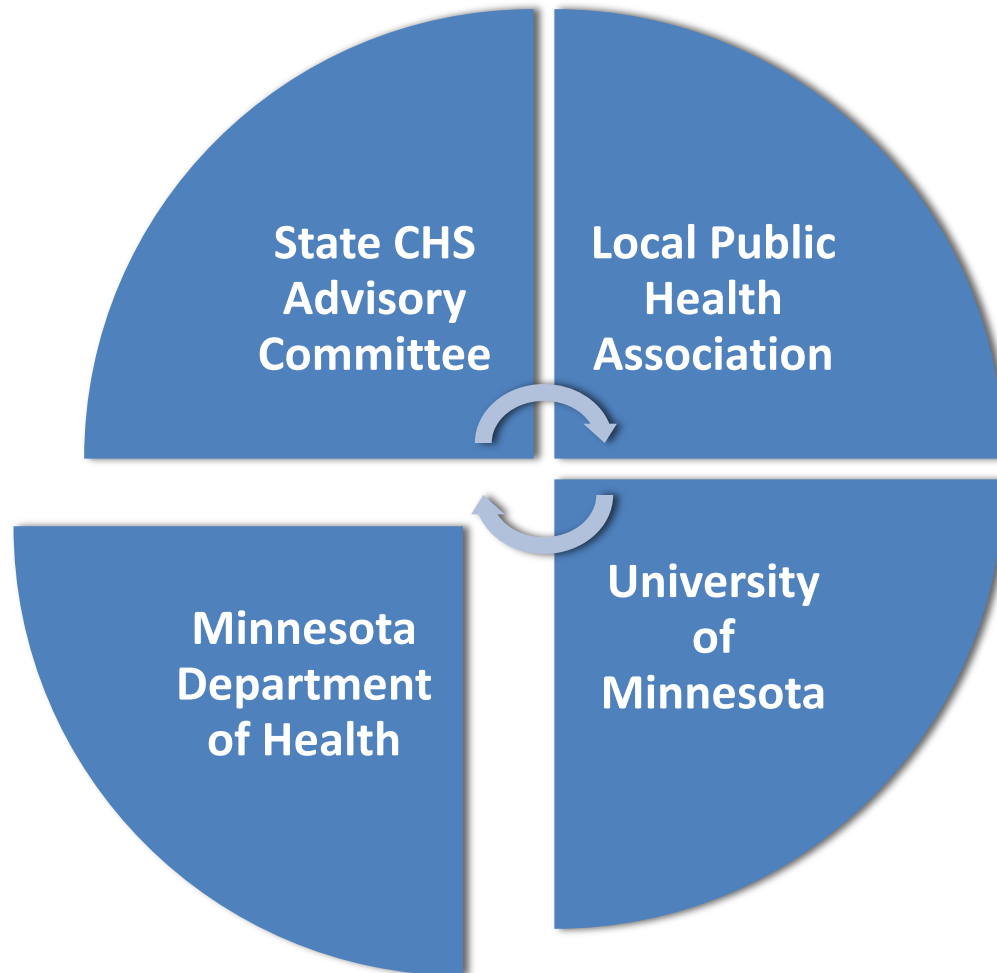
Minnesota
Public Health
Research to
Action Network

Research to Action Network

Minnesota Department of Health

PBRN housed in
the Office of
Performance
Improvement

State public
health system
infrastructure





**Minnesota Public
Health Research to
Action Network**

www.health.state.mn.us/ran

Home

Research Agenda

Publications

Contact Us

Public Health Practice-
Based Research Networks:
National Coordinating
Center



**Office of Performance
Improvement (OPI)**

Home: OPI

Contact OPI

Sitemap

Minnesota Public Health Research to Action Network

The Minnesota Public Health Research to Action Network launched in 2009 to stimulate public health systems and services research across Minnesota. The network was created to produce important new insights and relevant findings that can be used by practitioners and elected officials to improve public health services, organizations, and systems, and ultimately improve the health of Minnesotans. The network is a partnership of:

- ▶ [State Community Health Services Advisory Committee](#)
- ▶ [Minnesota Local Public Health Association](#)
- ▶ [University of Minnesota School of Public Health](#)
- ▶ [Minnesota Department of Health](#)

Featured Research

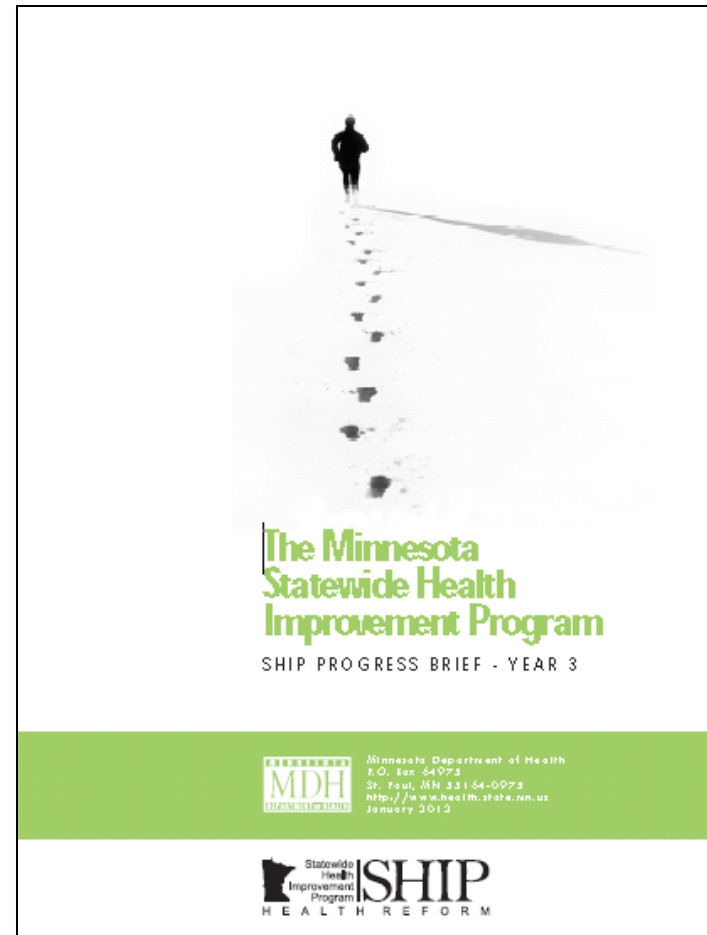
**[Analysis of Local Health Department Factors that Accelerate
Population-Based Intervention Implementation and Support
Success](#)** (PDF: 777KB / 14 slides)

[More Network Publications >](#)

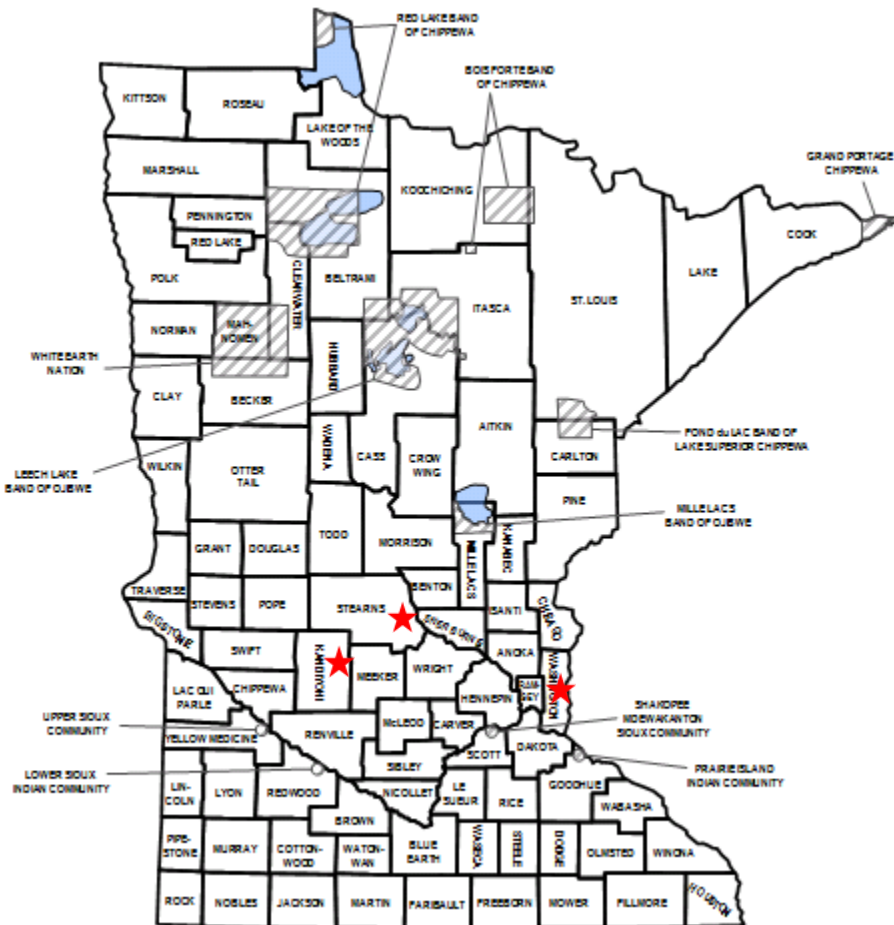


Translation: State level Program

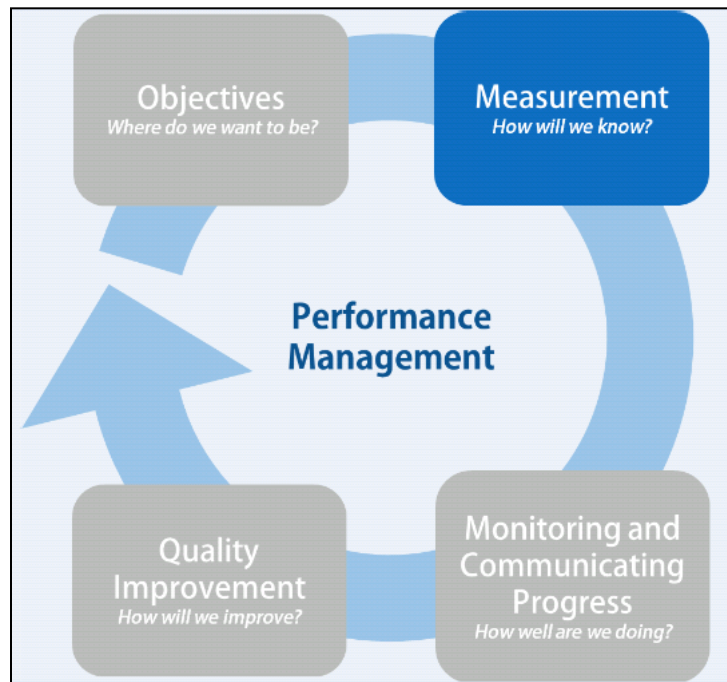
- Cross jurisdictional sharing
- Full time coordinator
- Local mini grants



Translation: Organization Level



Translation: System Level



MINNESOTA MDH DEPARTMENT OF HEALTH
State Community Health Services Advisory Committee (SCHSAC)
Performance Improvement Steering Committee
Office of Performance Improvement
Minnesota Department of Health
PO Box 64975
Saint Paul, MN 55164-0975
651-201-3530

New Local Public Health Act Performance Measures for the Planning and Performance Measurement Reporting System

A Report from the SCHSAC
Performance Improvement Steering Committee

September 2012

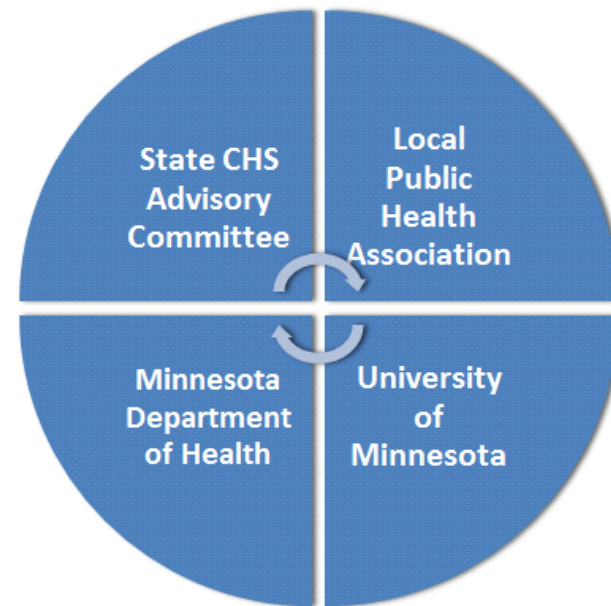
Dissemination and Translation

Lessons Learned

- Look at dissemination “data” – may find interesting patterns and missed opportunities
- Focus research on major initiatives and system priorities so stakeholders are ready to act on findings
- Don’t wait until you’re all done to disseminate – final product may come too late
- Disseminate through targeted, personal interaction and formal system-level communication
- Recognize (and celebrate!) full range of translation
 - Reinforce tentative new direction
 - Enhance an emerging or existing policy, practice or program
 - Implement something entirely new

Engagement

- Develop questions and measures together
- Use vetting and interactive voting
- Share first with participants
- Involve in interpretation
- Repeatedly acknowledge value of routine reporting and steps to maximize existing data
- Provide documentation for Domain 10



Acknowledgments

The Minnesota Department of Health is a grantee of two national programs of the Robert Wood Johnson Foundation

- Public Health Services and Systems Research
- Practice Based Research Network in Public Health

Minnesota public health directors, administrators and staff who contribute to practice-based research, dissemination and translation.

The Public Health Practice-Based Research Networks (PBRN) National Coordinating Center

National Coordinating Center for PHSSR

National Network of Public Health Institutes (NNPHI)



Minnesota
Public Health
Research to
Action Network

For More Information

Renee Frauendienst

Public Health Division Director

Stearns County Department of Human Services

Renee.Frauendienst@co.stearns.mn.us

Kim Gearin

Co-Director, MN Public Health Research to Action Network

Kim.gearin@state.mn.us

MN Public Health Research to Action Network

<http://www.health.state.mn.us/ran>

MN SHIP

<http://www.health.state.mn.us/SHIP>



Minnesota
Public Health
Research to
Action Network