

Grantee Product: 71266GPMeeting_04
Presenter Name: Jennifer Ibrahim, PhD, MPH
Presenter Title: Associate Professor, Department of Health Services Administration and Policy, Temple University
Title of Presentation: “Building Access and Understanding of Law in Public Health Practice in Nebraska”
Name of Meeting: APHA Annual Meeting
Host of Meeting: American Public Health Association
Date of Meeting: November 2014
Place of Meeting: New Orleans, LA

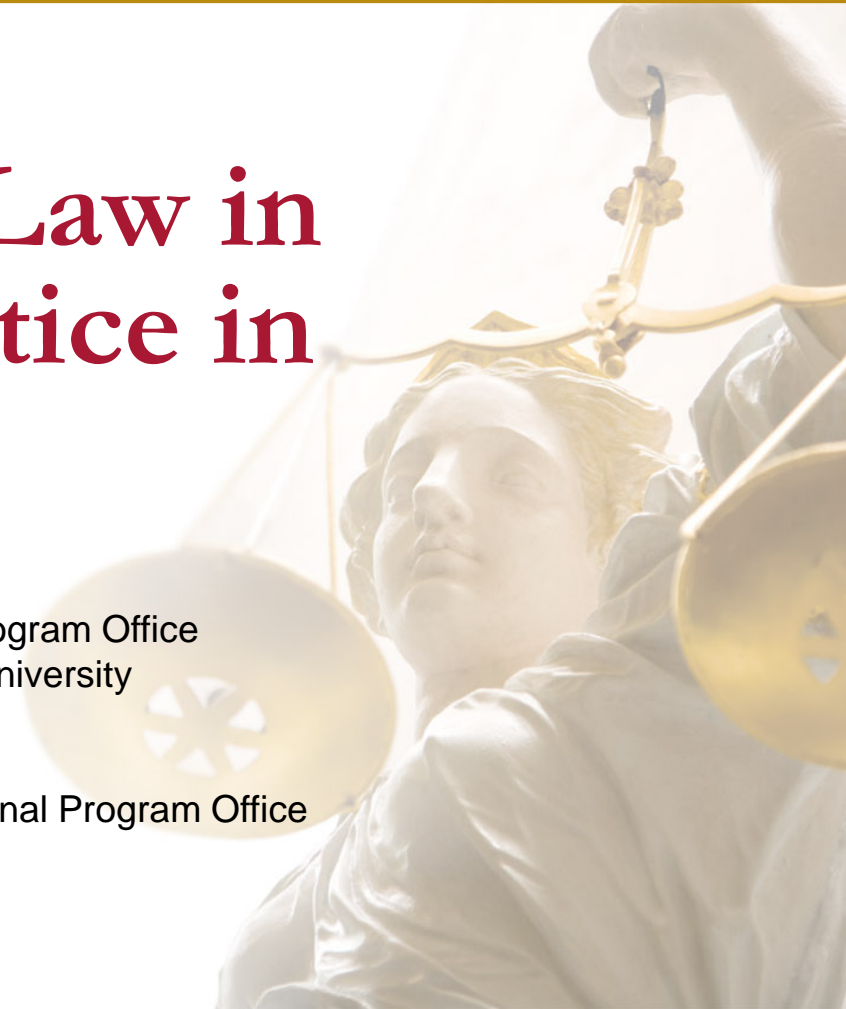
Building Access & Understanding of Law in Public Health Practice in Nebraska

Jennifer Ibrahim, PhD, MPH

Associate Director, Public Health Law Research National Program Office
Associate Professor, Department of Public Health, Temple University

Elizabeth Platt, JD, MAIR

Senior Legal Researcher, Public Health Law Research National Program Office





Acknowledgments

- Research Team

- Jennifer Ibrahim, Sarah Happy, David Presley, Elizabeth Platt, Sterling Johnson, Lindsay Foster, Kelly Thompson, Anette Hooper



- Darrell Klein, Colleen Svoboda



- Generous support provided by the Center for Public Health Services and Systems Research.

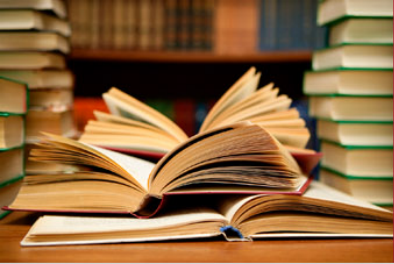


Accessing the Law?



Using the law





Project Aims

- *Aim 1: To systematically collect and code all state and local laws in Nebraska that govern the authority of public health agencies.*
- *Aim 2: To create an online policy surveillance system - interactive map, actual text, and database for Nebraska.*
- *Aim 3: To evaluate changes in perceptions of law and the use of law by the public health workforce in Nebraska.*
- *Aim 4: To evaluate the impact of a set of legal provisions on public health agency performance and population health.*



Methods

- Scope of Laws
- Data Collection
 - Nebraska team collected laws
 - Temple team verifies

Neb. Rev. Stat. § 71-5716 Act, how cited.

Sections 71-5716 to 71-5734 shall be known and may be cited as the Nebraska Clean Indoor Air Act.

Neb. Rev. Stat. § 71-5717 Purpose of act.

The purpose of the Nebraska Clean Indoor Air Act is to protect the public health and welfare by prohibiting smoking in public places and places of employment. The act shall not be construed to prohibit or otherwise restrict smoking in outdoor areas. The act shall not be construed to permit smoking where it is prohibited or otherwise restricted by other applicable law, ordinance, or resolution. The act shall be liberally construed to further its purpose.

Neb. Rev. Stat. § 71-5718 Definitions, where found.

For purposes of the Nebraska Clean Indoor Air Act, the definitions found in sections 71-5719 to 71-5728 apply.

Neb. Rev. Stat. § 71-5719 Employed, defined.

Employed means hired, contracted, subcontracted, or otherwise engaged to furnish goods or services.

Neb. Rev. Stat. § 71-5720 Employee, defined.

Employee means a person who is employed by an employer in consideration for direct or indirect monetary wages, profit, or other remuneration.

Neb. Rev. Stat. § 71-5721 Employer, defined.

Employer means a person, nonprofit entity, sole proprietorship, partnership, joint venture, corporation, limited partnership, limited liability company, cooperative, firm, trust, association, organization, or other business entity, including retail establishments where goods or services are sold, who or which employs one or more employees.

Methods

- Defining questions
- Data Coding in *Workbench* on LawAtlas.org

Where is smoking prohibited under the Nebraska Clean Indoor Air Act?

clear

- Place of employment
- Public place
- Child care program
- Outdoor areas

?

What is a place of employment restricted by the Nebraska Clean Indoor Air Act?

clear

- An indoor area under the control of a proprietor that an employee accesses as part of his or her employment without regard to whether the employee is present or work is occurring at any given time

?

2 child question(s) ▼

What is a public place restricted by the Nebraska Clean Indoor Air Act?

clear

- An indoor area to which the public is invited or in which the public is permitted, whether or not the public is always invited or permitted

?

2 child question(s) ▼



LawAtlas – Nebraska Local

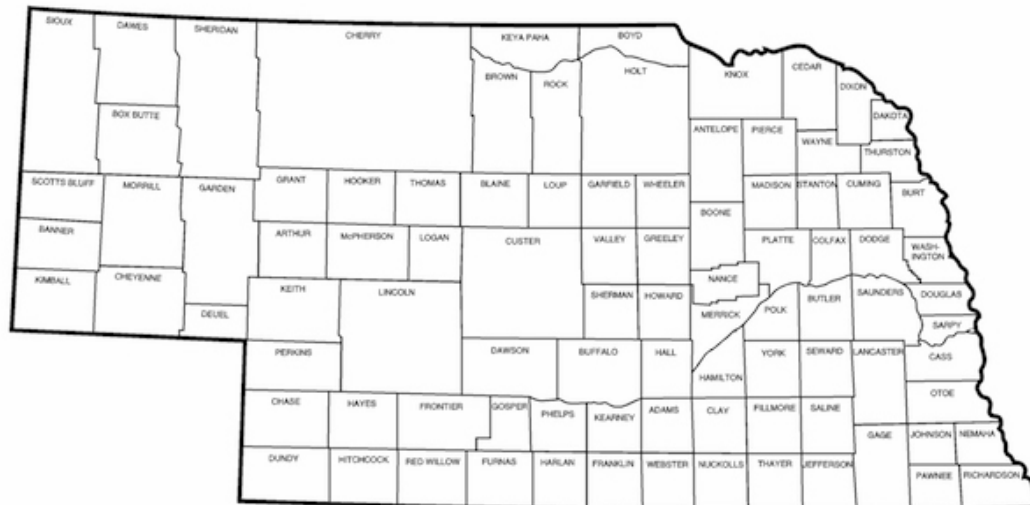
LawAtlas

The Policy Surveillance Portal

Home / Nebraska Local Public Health Laws

Nebraska Local Public Health Laws

Coming Soon



Bodies of Law Covered

- Alcohol, Tobacco & Other Drugs
- Chronic Disease & Injury
- Environmental Health
- Foodborne Illness
- Structure & Governance
- Health Professions & Licensure
- Disasters & Emergencies
- Maternal Health, Children & Families
- Nutrition & Physical Activity
- Vital Statistics
- Mental & Behavioral Health
- Seniors & Aging
- Disabilities

DEMONSTRATION OF NEBRASKA'S LAWATLAS SYSTEM

LawAtlas

The Policy Surveillance Portal

Home / Nebraska Public Health Laws

Nebraska Public Health Laws

The Nebraska Department of Health and Human Services (NE DHHS) provides public health services to Nebraskans and promotes public health by implementing laws and regulations that address health issues, track health outcomes, and certify and license health professionals.

This section of LawAtlas tracks laws and regulations that relate to NE DHHS's core mission. Below are links to pages that provide contextual information and texts of relevant laws and regulations on key functions of the NE DHHS. Select one of these options below for more information on the specific topic area and to access the surveillance of key public health laws and regulations.

- [Alcohol, Tobacco, and Other Drugs](#)
- [Chronic Disease and Injury](#)
- [Disabilities](#)
- [Disasters and Emergencies](#)
- [Environmental Health](#)
- [Foodborne Illnesses](#)
- [Health Professions Licensure](#)
- [Maternal Health, Children, and Families](#)
- [Mental and Behavioral Health](#)
- [Seniors and Aging](#)
- [Structure and Governance](#)
- [Vital Statistics](#)



Available at:

www.lawatlas.org/nebraska

PHLR PUBLIC HEALTH LAW RESEARCH

Making the Case for Laws that Improve Health

Thank you

Jennifer Ibrahim, PhD, MPH

Associate Director

Public Health Law Research National Program Office

Associate Professor

Department of Public Health, Temple University

jibrahim@temple.edu

215-204-9657

