

# **An Analysis of the Quality of Wisconsin's Community Health Improvement Plans and Processes COPPHI Meeting June 19, 2012**

Julie Willems Van Dijk PhD

Bridget Catlin Booske PhD



# Outline

---



- The Community Health Improvement Plans and Processes (CHIPP) Cycle
  - Why CHIPP?
  - CHIPP Quality Measurement Tool
  - What's Next?
  - Discussion
-

# TAKE ACTION

WORK TOGETHER



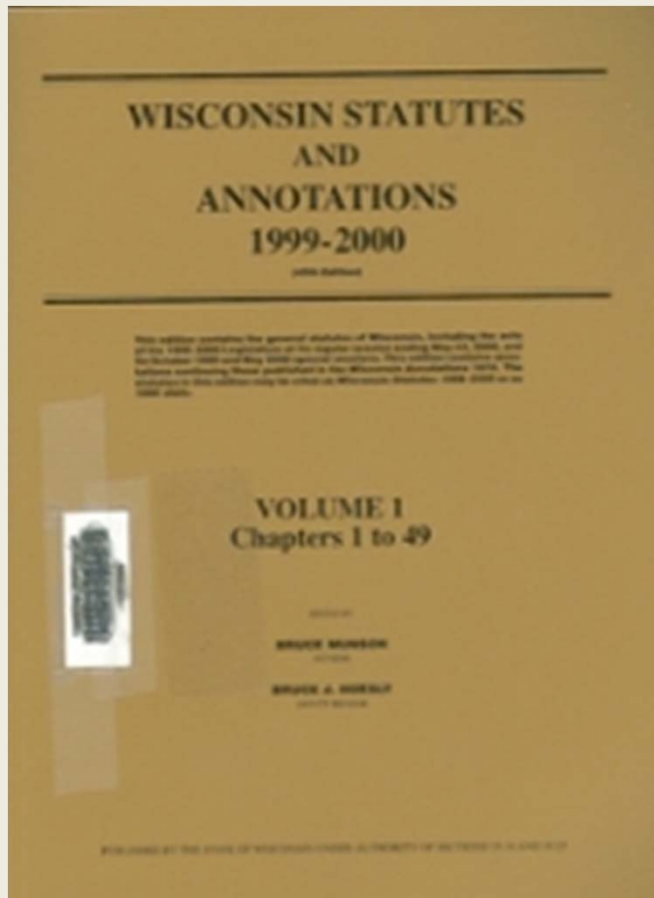
# Why CHIPP?

---



- Mandates
-

# Local Health Departments



*s.251.05(3)(c) A local health department shall involve key policy makers and the general public in determining and developing a CHIP... AND s.251.05(3) Develop public health policies and procedures for the community; Complete a community health assessment; collect, review and analyze data on community health and identify population groups, families and individuals at high risk of illness, injury, disability or premature death. Participate in development of community plans that include identification of community health priorities, goals and objectives to address current and emerging threats to the health of individuals, families, vulnerable population groups and the jurisdiction as a whole, and contribute to the planning efforts that support community strengths and assets. Assure programs and services that focus on reducing health disparities and are based on evaluation of surveillance data and other factors that increase actual or potential risk of illness, disability, injury, or premature death.*

# Not for Profit Hospitals

Every 3 years:

Community Health

Needs Assessments

With community partners  
and public data

Identify plans and roles for  
health improvement

## The Affordable Health Care Act

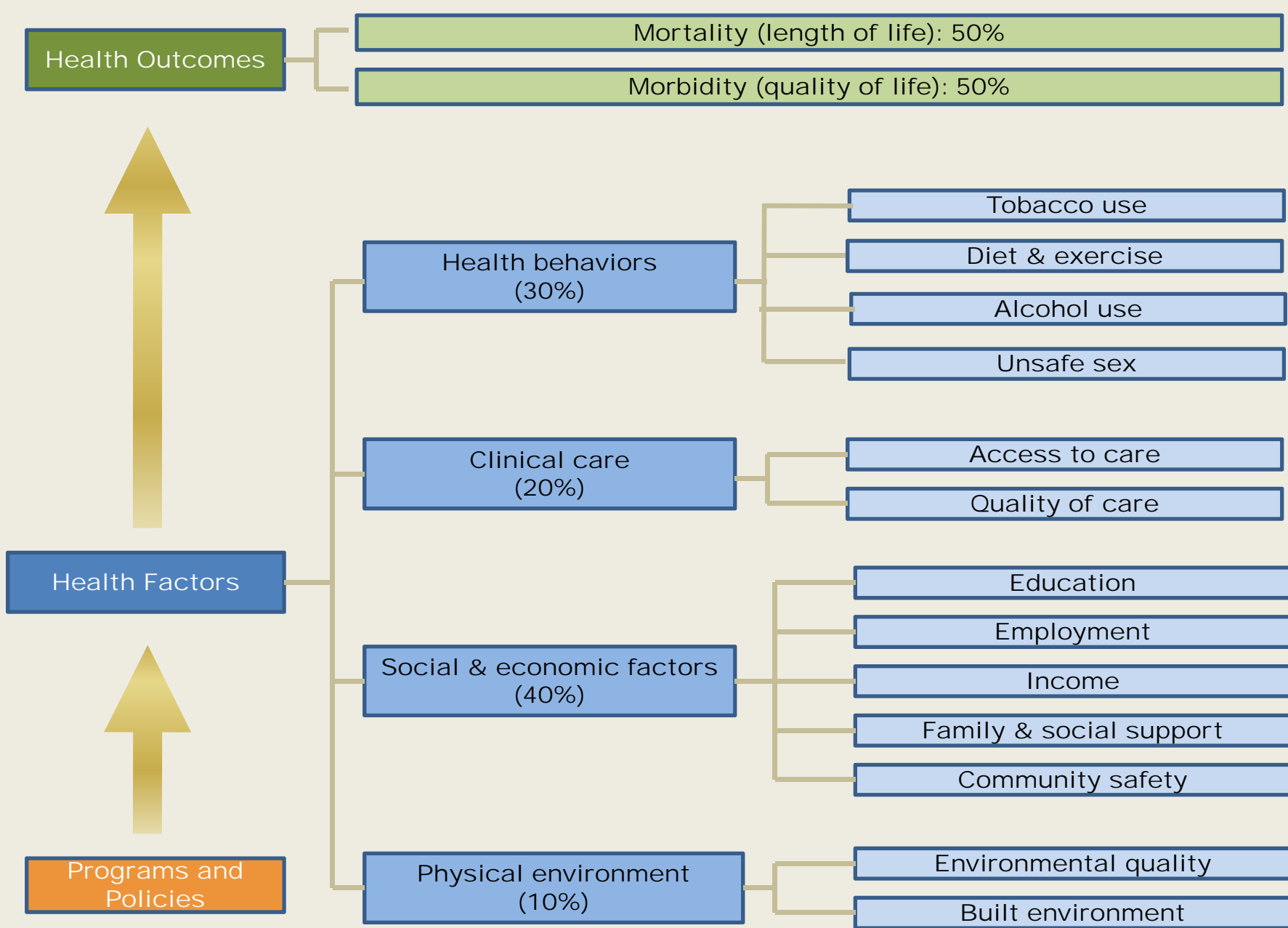


# Why CHIPP?

---



- Mandates
  - Making meaningful change
-





# Why CHIPP?

---



- Meeting mandates
  - Making meaningful change
  - Maximizing resources
-

# CHIPP Quality Measurement Tool



- Modeled after the Public Health Accreditation Standards (Version 1.0 released July, 2011)
  - Organized around each step in the CHIPP
  - Content Validity will be based on review by local and state health department leaders and Public Health Accreditation Board staff or reviewers
-

# Three Stages

---



- Develop CHIPP Quality Measurement Tool
  - Measure Wisconsin's CHIPPs
  - Conduct a comparative analysis to determine if there are any structural or process factors that predict higher quality CHIPPs
-

# Stage One: CHIPP Quality Measurement Tool

---



- ❑ Modeled after the Public Health Accreditation Standards (Version 1.0 released July, 2011)
  - ❑ Organized around each step in the CHIPP
  - ❑ Content Validity was established based on review by an expert panel of local and state health department leaders and Public Health Accreditation Board staff
-

# Expert Panel

---



- ❑ Terry Brandenburg, Medical College of WI & Former West Allis Health Officer
  - ❑ Elizabeth Giese, Division of Public Health
  - ❑ Becky Hovarter, Shawano County Health Officer
  - ❑ Joan Theurer, Marathon County Health Officer
  - ❑ Robin Wilcox, Chief Operations Officer, Public Health Accreditation Board
-

# TAKE ACTION

WORK TOGETHER



Stage	Measure	Documentation
General	The CHA document(s) are electronically available to the public via a website.	Research staff were able to find CHA online.
Work Together	The local community at large has had the opportunity to review and comment on the CHA &/or CHIP.	There is evidence that feedback was sought and included in the CHA &/or CHIP. Methods to seek this feedback include publishing in the local press with comment or feedback forms, publication on the department website with a comment form, community/town forums, listening sessions, newsletters, discussions or presentations at other organizations' meetings, etc.
Assess Needs	Local data are compared to other agencies, regions, state, or national data.	There are at least two examples of comparison data that compare data from similar data sources over similar timeframes.
Prioritize	CHIP contains measurable objectives with time-framed targets.	The CHIP or an associated work plan has measurable objectives and time-framed targets.

Stage	Measure	Documentation
Pick Programs & Policies that Work	CHIP identifies improvement strategies that are evidence-informed.	Strategies identified in the plan are evidence-informed, promising practices, or innovative strategies. Innovative strategies are considered evidence-informed if they have a clear foundation and reasoning and a clear evaluation plan to monitor results. Guidance is provided by the National Prevention Strategy, Guide to Community Preventive Services, Healthy People 2020, Healthiest Wisconsin 2020, or What Works for Health.
Implement	CHIP identifies individuals and organizations that have accepted responsibility for implementing strategies	The CHIP includes designation of individuals or organizations that have accepted responsibility for implementing strategies outlined in the CHIP. (Does not need to be formal MOU/MOA)
Evaluate	CHIP contains a plan for performance indicators for strategies.	CHIP or a companion document indicates what indicators will be used to measure implementation progress.



# STAGE TWO: Measure CHA & CHIP Quality

---



- ❑ Collected all 92 CHA's and CHIP's
  - ❑ Scoring currently underway
  - ❑ Two researchers score and differences reconciled by one of the Principal Investigators
  - ❑ Follow up review and survey with Local Health Officer
-

# Examples of Survey Questions

---



- Have you shared data from your Community Health Assessment (CHA) with the general public?
  - Have you engaged with governing entities, advisory boards, and/or elected officials that may influence policies or strategies proposed in your Community Health Assessment & Improvement Plan?
  - Within the past five years, have you sought feedback from your stakeholders about what has gone well and areas for improvement in the Community Health Improvement Planning Process?
-

# STAGE THREE: Comparative Analysis

---



## □ Structural Factors

- Population
- Expenditures
- Region
- Staffing

## □ Process Factors

- CHIPP Model
  - # of sectors in partnership
  - New resources identified
-



---

Julie Willems Van Dijk RN PhD  
Associate Scientist  
Deputy Director, County Health Roadmaps  
(608) 263-6731  
willemsvandi@wisc.edu

---



---

# DISCUSSION

---